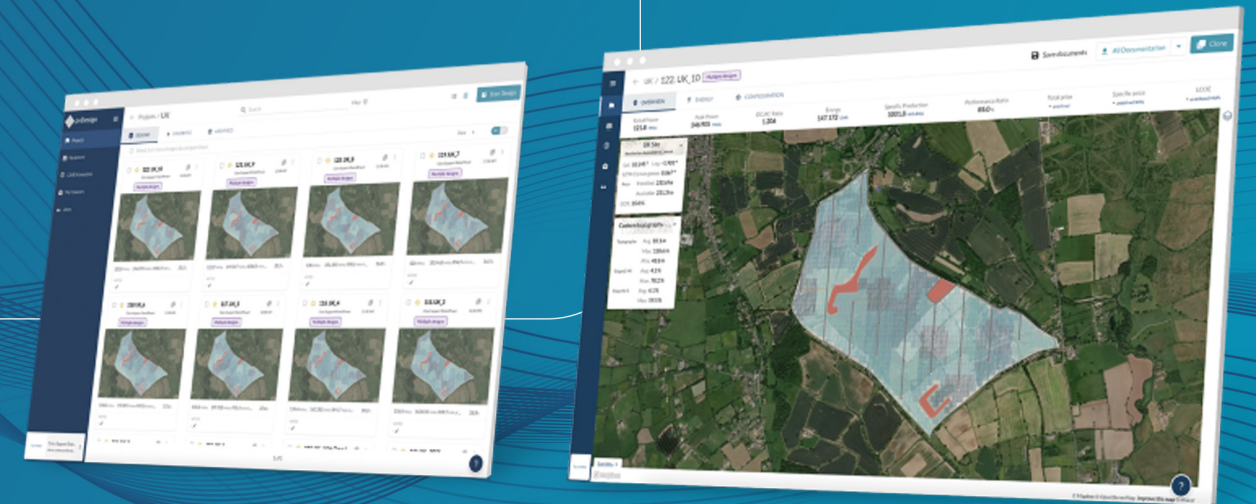


Webinar:



Planning your utility-scale PV plant digitally with RatedPower's software

5th September 2023



GONZALO DE BLAS
ACCOUNT EXECUTIVE UK&I
RatedPower



FATEN DRISS
TECHNICAL ADVISOR
RatedPower



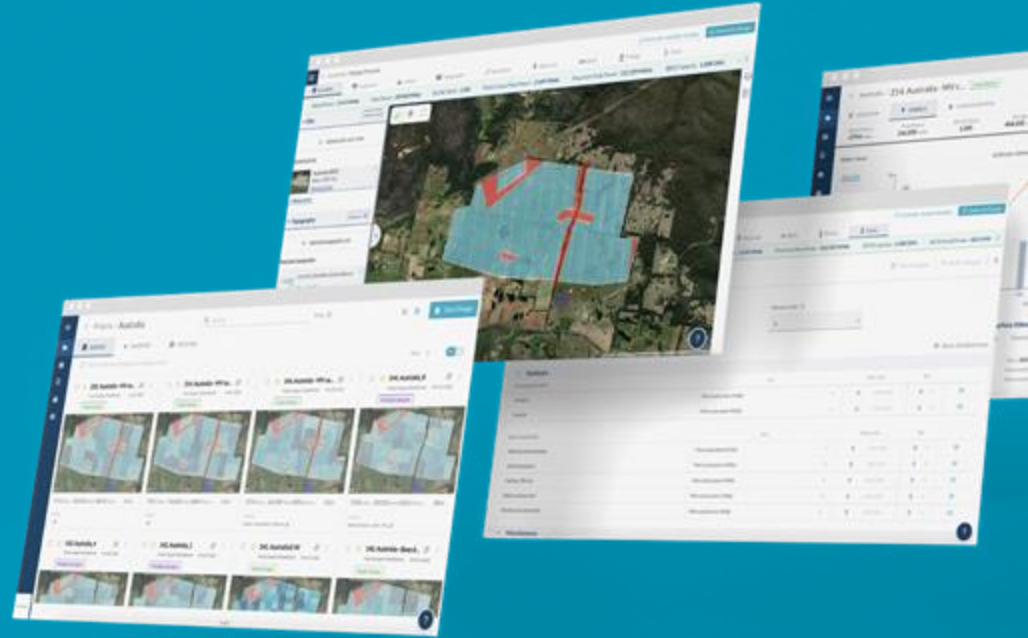
CARLOS SÁNCHEZ SMITH
SENIOR ENERGY ANALYST
BUTE ENERGY



MODERATED BY
ANDY COLTHORPE
DEPUTY EDITOR IN CHIEF
SOLAR MEDIA

Planning your utility-scale PV plant digitally

With RatedPower's software



September 2023



Who are we



Gonzalo de Blas

Account Executive,
RatedPower

gblas@ratedpower.com



Faten Driss

Technical Advisor,
RatedPower

fdriss@ratedpower.com



Carlos Sánchez

Senior Energy Analyst,
Bute Energy

carlos.sanchezsmith@bute.energy



01 Introduction

02 Challenges in UK

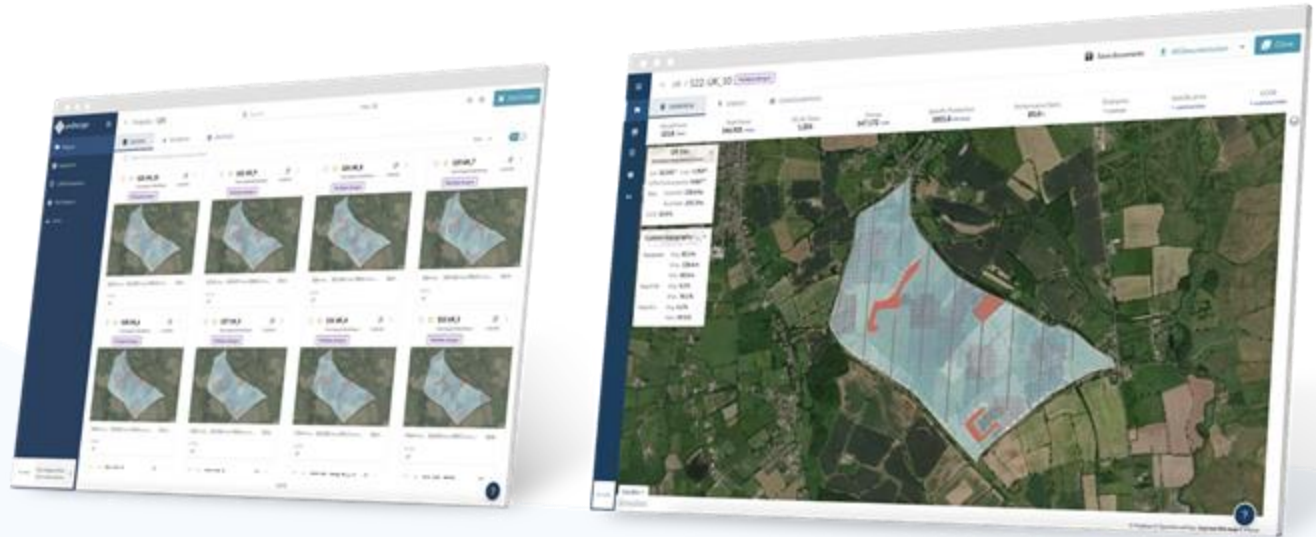
03 Planning your utility-scale
PV plant digitally: LIVE



Introduction

01

RatedPower's pvDesign: Supporting developers, EPCs, and solar companies to reduce LCOE and increase ROI



Planning your utility-scale PV plant digitally



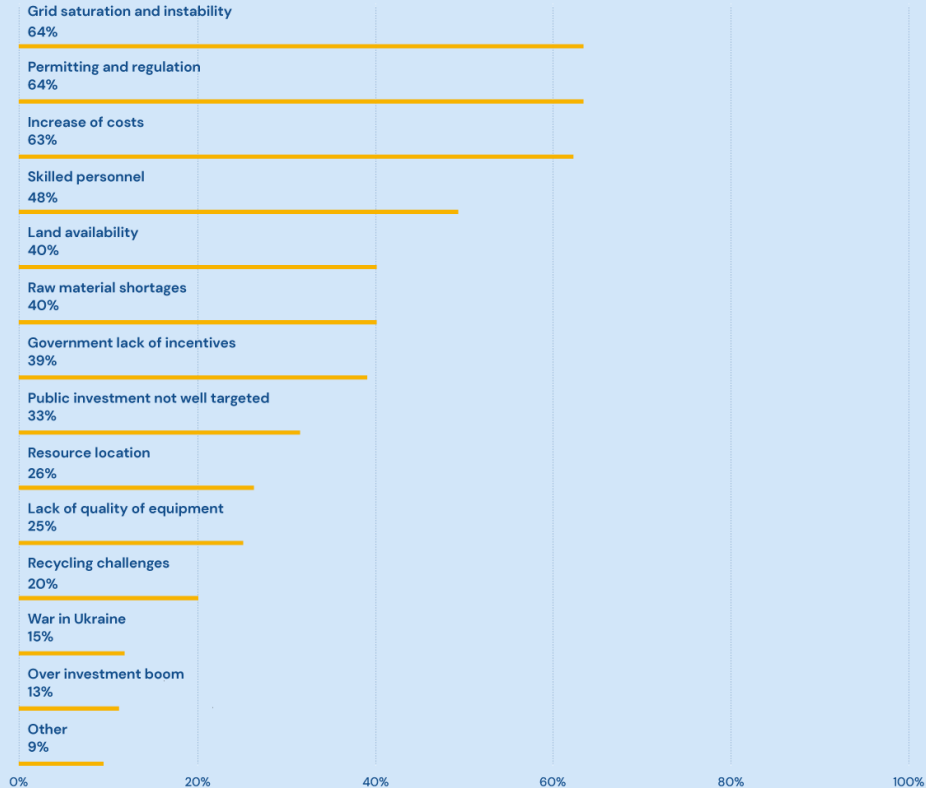
Solar market leaders trust RatedPower



Challenges in UK

02

Challenges in renewable energies (worldwide)



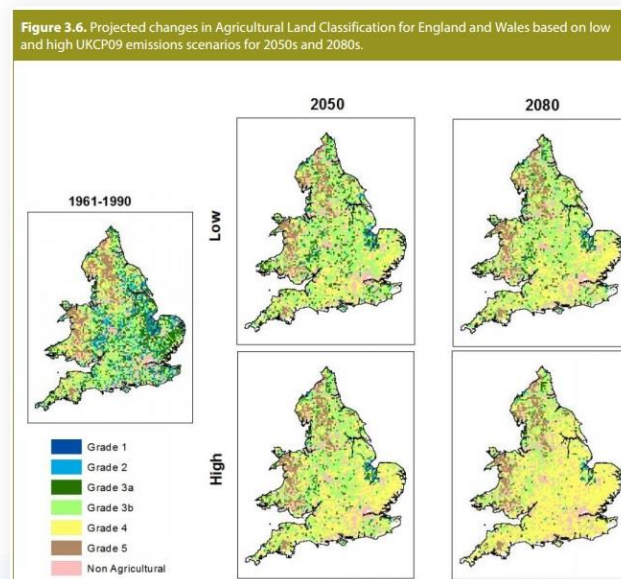
Renewable Energy and
Solar Research Report 2023

[What's in store for 2023: Renewable Energy
and Solar Research Report" \(RatedPower, 2023\)](#)



Challenges in renewable energies and PV in UK&I

→ Land classification and agriculture interaction



Source: [ABDA](#).



Land classification scheme in the UK

Grade	Quality	Production	Yield quality
Grade 1	Excellent	High yields with quality	Consistent
Grade 2	Very good	Generally high yields	Lower or variable
Grade 3	Good to moderate	Limitations	Affected
Grade 3a	Good	Narrow range	Moderate/high
Grade 3b	Moderate	Narrow range	Moderate
Grade 4	Poor	Severe limitations	Significantly affected
Grade 5	Very poor	Severe limitations	Permanent pasture or rough grazing

Source. [UK Government](#)



How will changes to UK land categorization affect the future of solar farms?



Land classification scheme in the UK

Grade	Quality	Production	Yield quality
Grade 1	Excellent	High yields with quality	Consistent
Grade 2	Very good	Generally high yields	Lower or variable
Grade 3	Good to moderate	Limitations	Affected
Grade 3a	Good	Narrow range	Moderate/high
Grade 3b	Moderate	Narrow range	Moderate
Grade 4	Poor	Severe limitations	Significantly affected
Grade 5	Very poor	Severe limitations	Permanent pasture or rough grazing



Source. [UK Government](#)



Planning your utility-scale PV plant digitally: LIVE

03



Questions?



Gonzalo de Blas

Account Executive,
RatedPower

gblas@ratedpower.com



Faten Driss

Technical Advisor,
RatedPower

fdriss@ratedpower.com



Carlos Sánchez

Senior Energy Analyst,
Bute Energy

carlos.sanchezsmith@bute.energy

